

PredicineCARE™

CLIA Validated cfDNA NGS Assay

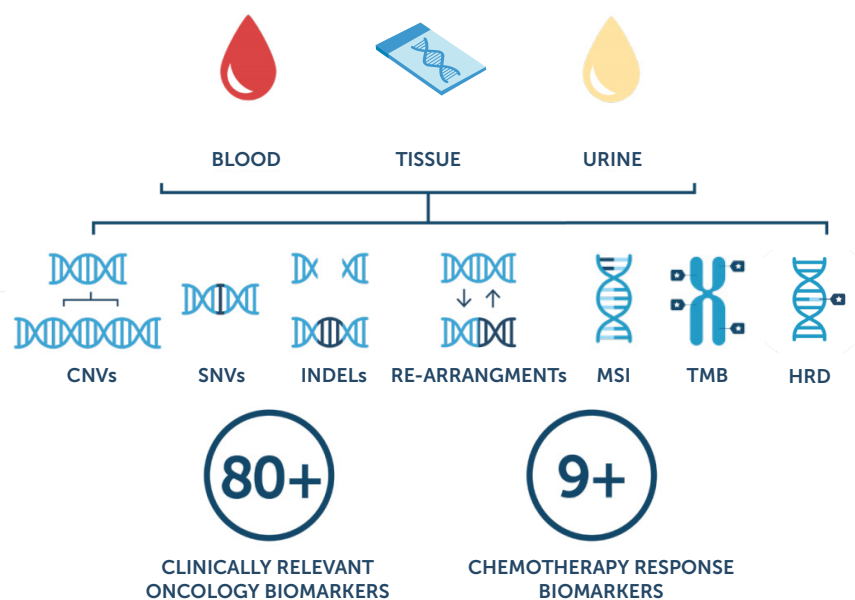
Pan-cancer NGS assay for therapy selection and monitoring

200

Key cancer genes interrogated

20,000x

Sequencing Depth (Liquid Biopsy)



Note: Some features are only included in the RUO version. Additional information available upon request.

Methods and Reporting

- Identify key genomic aberrations including single nucleotide variants (SNVs), indels, copy number variations (CNVs), DNA rearrangements, microsatellite instability (MSI) and tumor mutational burden (TMB) and homologous recombination deficiency (HRD)
- Comprehensive tumor profiling integrated with PredicineSCORE™ low-pass whole genome sequencing; no additional input required
- Covers cancer-related genomic alterations relevant for clinical drug development
- Test results are provided in an interpretive report with clinically relevant genomic findings

Workflow



Gene List

ABL1	ABRAXAS1	AKT1	AKT2	AKT3	ALK	APC	AR	ARAF	ARID1A	ARID2	ATM	ATR
ATRX	BAP1	BARD1	BCL2	BRAF	BRCA1	BRCA2	BRIP1	BTBK	CALR	CBL	CCND1	CCND2
CCND3	CCNE1	CCNE2	CD274	CD74	CDH1	CDK12	CDK4	CDK6	CDKN2A	CDKN2B	CEBPA	CHEK1
CHEK2	CREBBP	CTNNB1	CXCR4	CYP2C19	CYP2D6	CYP3A4	DAXX	DDR2	DICER1	DNAJB1	DNMT3A	DPYD
EGFR	EPCAM	ERBB2	ERBB3	ERCC1	ERCC2	ESR1	ETV6	EWSR1	EZH1	EZH2	EZR	FANCA
FANCC	FANCF	FANCG	FANCL	FAT1	FBXW7	FEN1	FGFR1	FGFR2	FGFR3	FGFR4	FLT3	FOXA1
FOXL2	GATA2	GATA3	GEN1	GNA11	GNAQ	GNAS	GSTP1	H3F3A	H3F3B	HNF1A	HOXB13	HRAS
HSD3B1	IDH1	IDH2	IL15	JAK2	JAK3	KDM6A	KEAP1	KIT	KMT2A	KMT2C	KMT2D	KRAS
MAP2K1	MAP2K2	MAPK1	MAPK3	MDM2	MED12	MET	MLH1	MPL	MRE11	MSH2	MSH6	MTAP
MTHFR	MTOR	MYC	MYCN	MYD88	NBN	NF1	NFE2L2	NOTCH1	NOTCH2	NPM1	NRAS	NTRK1
NTRK2	NTRK3	PALB2	PDCD11	PDCD1LG2	PDGFRA	PDGFRB	PGR	PIK3CA	PIK3CB	PIK3R1	PLCG2	PMS2
POLD1	POLE	PPP2R1A	PPP2R2A	PRKACA	PRKD1	PRMT7	PTEN	PTPN11	RAC1	RAD50	RAD51	RAD51B
RAD51C	RAD51D	RAD52	RAD54L	RAF1	RB1	RET	RHBG	RHEB	RHOA	RIT1	RNF43	ROS1
RSPO2	SDC4	SDHB	SF3B1	SLC34A2	SMAD4	SMARCA2	SMARCA4	SMARCB1	SMO	SPOP	SRSF2	STAG2
STAT3	STAP2	STK11	TERC	TERT	TMPRSS2	TP53	TSC1	TSC2	U2AF1	UGT1A1	VEGFB	VHL
WT1	XPC	XRCC1	YEATS4	ZRSR2								

■ SNVs + Indels
 ■ SNPs
 ■ CNVs
 ■ DNA Rearrangement
 ■ CNV + DNA Rearrangement

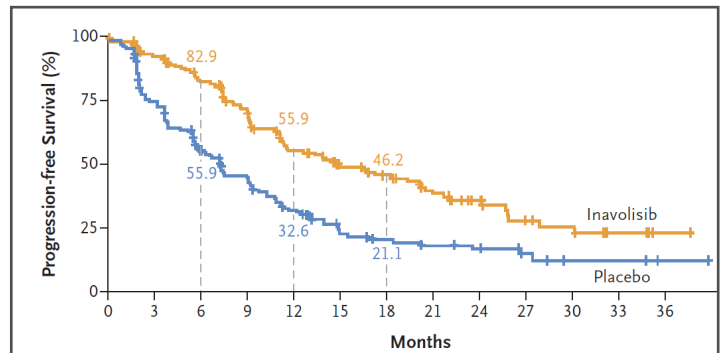
Blood-Based PredicineCARE for Patient Enrollment in Phase III Breast Cancer Trial



The NEW ENGLAND JOURNAL of MEDICINE

Inavolisib-Based Therapy in *PIK3CA*-Mutated Advanced Breast Cancer

N.C. Turner, S.-A. Im, C. Saura, D. Juric, S. Loibl, K. Kalinsky, P. Schmid, S. Loi, P. Sunpaweravong, A. Musolino, H. Li, Q. Zhang, Z. Nowecki, R. Leung, E. Thanopoulou, N. Shankar, G. Lei, T.J. Stout, K.E. Hutchinson, J.L. Schutzman, C. Song, and K.L. Jhaveri



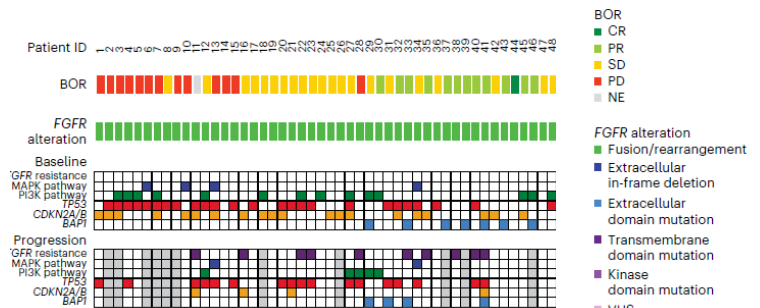
N.C. Turner, et al. N Engl J Med, 2024

Blood-Based PredicineCARE for Exploring FGFR Resistance Mechanisms in Phase II Clinical Trial

nature medicine

Article <https://doi.org/10.1038/s41591-024-02934-7>

Pemigatinib in previously treated solid tumors with activating *FGFR1-FGFR3* alterations: phase 2 FIGHT-207 basket trial



Rodon J, et al. Nature Medicine, 2024

© 2025 Predicine, Inc. All rights reserved. All trademarks are the property of Predicine, Inc. or their respective owners.

For Research Use Only. Not for use in diagnostic procedures.

